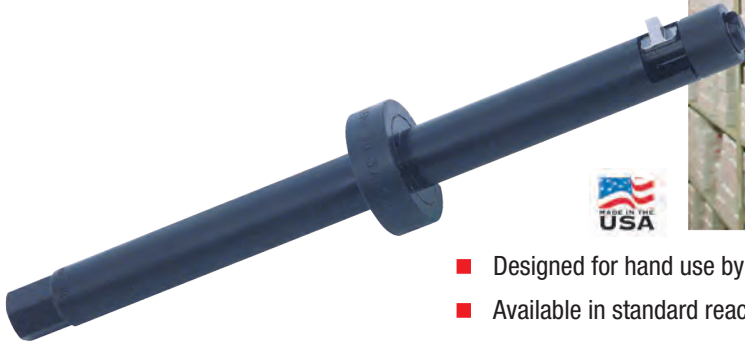


Tube Removal Tools

RCM One Revolution Tube Cutters

For cutting tubes beyond the tube sheet in heat exchangers, condensers, and boilers. RCM series tube cutters are also an excellent tool for puncturing defective tubes prior to tube plugging. This reduces the risk of pressure buildup in plugged tubes.



- Designed for hand use by employing a ratchet or hand wrench for manual operation.
- Available in standard reaches of 6" (152mm) and 10" (254mm).
- Longer reaches are available in 10" increments upon request.

Tube O.D.		BWG	Tube I.D.	Tool Reach		Cutting Bit
in.	mm			6" (152.4mm)	10" (254.0mm)	
1/2	12.70	18-19	.400"- .420" 10.2-10.7mm	RCM-105 (5522994)	RCM-105-10 (5523116)	RC-500-2 (2993368)
1/2	12.70	20	.430"- .450" 11.0-11.3mm	RCM-110 (5522929)	RCM-110-10	RC-500-2 (2993368)
5/8	15.88	14	.450"- .470" 11.4-11.9mm	RCM-115 (5522995)	RCM-115-10 (5523118)	RC-625-2 (2993372)
5/8	15.88	15-16	.472"- .510" 12-12.9mm	RCM-120 (5522930)	RCM-120-10 (5523119)	RC-625-2 (2993372)
5/8	15.88	17-18	.500"- .531" 12.7-13.5mm	RCM-130 (5522931)	RCM-130-10 (5523120)	RC-625-2 (2993372)
5/8	15.88	19-20	.531"- .560" 13.5-14.2mm	RCM-135 (5522996)	RCM-135-10 (5523121)	RC-625-2 (2993372)
5/8	15.88	22	.550"- .580" 14.0-14.7mm	RCM-140 (5522932)	RCM-140-10 (5524952)	RC-625-2 (2993372)
3/4	19.05	12-13	.530"- .560" 13.5-14.2mm	RCM-135-3/4 (5523115)	RCM-135-3/4-10 (5526397)	RC-750-2A (2995865)
3/4	19.05	14-15	.580"- .610" 14.7-15.5mm	RCM-150 (5522933)	RCM-150-10 (5523123)	RC-750-2 (2993374)
3/4	19.05	16	.600"- .630" 15.2-16.0mm	RCM-155 (5522997)	RCM-155-10 (5523124)	RC-750-2 (2993374)
3/4	19.05	17-18	.625"- .650" 15.9-16.5mm	RCM-160 (5522934)	RCM-160-10 (5523125)	RC-750-2 (2993374)
3/4	19.05	19-20	.660"- .690" 16.7-17.5mm	RCM-170 (5522935)	RCM-170-10 (5523126PT)	RC-750-2 (2993374)
7/8	22.22	14-15	.700"- .730" 17.8-18.5mm	RCM-180 (5522936)	RCM-180-10 (5523127)	RC-875-2 (2993384)
7/8	22.22	16-17	.740"- .770" 18.8-19.5mm	RCM-190 (5522937)	RCM-190-10 (5523128)	RC-875-2 (2993384)
7/8	22.22	18	.760"- .790" 19.3-20.0mm	RCM-195 (5522998)	RCM-195-10 (5524478)	RC-875-2 (2993384)
7/8	22.22	19-20	.780"- .810" 19.8-20.6mm	RCM-200 (5522938)	RCM-200-10 (5523241PT)	RC-875-2 (2993384)
1	25.40	12	.760"- .790" 19.3-20.0mm	RCM-195 (5522998)	RCM-195-10 (5524478)	RC-875-2 (2993384)
1	25.40	14	.820"- .850" 20.8-21.6mm	RCM-210 (5522939)	RCM-210-10 (5523131)	RC-1000-2 (2993394)
1	25.40	15	.840"- .870" 21.3-22.1mm	RCM-215 (5522999)	RCM-215-10 (5523132)	RC-1000-2 (2993394)
1	25.40	16-17	.860"- .890" 21.8-22.6mm	RCM-220 (5522940)	RCM-220-10 (5523133)	RC-1000-2 (2993394)

Tube O.D.		BWG	Tube I.D.	Tool Reach		Cutting Bit
in.	mm			6" (152.4mm)	10" (254.0mm)	
1	25.40	18-19	.890"- .910" 22.6-23.1mm	RCM-230 (5522941)	RCM-230-10 (5523134)	RC-1000-2 (2993394)
1	25.40	22	.940"- .970" 23.9-24.6mm	RCM-240 (5522942)	RCM-240-10 (5525584)	RC-1000-2 (2993394)
1-1/4	31.75	12	1.020"- 1.050" 25.9-26.7mm	RCM-260 (5523000)	RCM-260-10 (5523136)	RC-1250-2 (2993404)
1-1/4	31.75	13-14	1.050"- 1.080" 26.7-27.4mm	RCM-270 (5523001)	RCM-270-10 (5523137)	RC-1250-2 (2993404)
1-1/4	31.75	15-16	1.100"- 1.130" 27.9-28.7mm	RCM-280 (5523002)	RCM-280-10 (5523138)	RC-1250-2 (2993404)
1-1/4	31.75	17-19	1.130"- 1.160" 28.7-29.6mm	RCM-290 (5523003)	RCM-290-10 (5523139)	RC-1250-2 (2993404)
1-3/8	34.93	13-14	1.180"- 1.210" 30-30.7mm	RCM-300 (5523709)	RCM-300-10 (5525838)	RC-1500-2 (2993417)
1-1/2	38.10	12-13	1.280"- 1.310" 32.5-33.3mm	RCM-330 (5523004)	RCM-330-10 (5523140)	RC-1500-2 (2993417)
1-1/2	38.10	14-15	1.330"- 1.360" 33.8-34.5mm	RCM-340 -	RCM-340-10 (5523005)	RC-1500-2 (2993417)
1-1/2	38.10	16-17	1.360"- 1.390" 34.5-35.3mm	RCM-350 (5523006)	RCM-350-10 (5523142)	RC-1500-2 (2993417)
1-1/2	38.10	18-19	1.390"- 1.420" 35.3-36.1mm	RCM-360 (5523007)	RCM-360-10 (5523143)	RC-2000-2 (2993427)
2	50.80	12-13	1.770"- 1.810" 45.0-46.0mm	RC-2012 (5521677)	RC-2012-10	RC-2000-2 (2993427)
2	50.80	14-15	1.820"- 1.860" 46.2-47.2mm	RC-2014 (5521678PT)	RC-2014-10	RC-2000-2 (2993427)
2	50.80	16-17	1.860"- 1.900" 46.2-48.2mm	RC-2016 (5521679)	RC-2016-10	RC-2000-2 (2993427)
2	50.80	18-19	1.890"- 1.930" 48.0-49.0mm	RC-2018 (5521680)	RC-2018-10	RC-2000-2 (2993427)
2-1/2	63.50	12-13	2.270"- 2.310" 57.6mm-58.6	RC-2512 (5521681)	RC-2512-10	RC-2000-2 (2993427)
2-1/2	63.50	14-15	2.320"- 2.360" 58.9-60.0mm	RC-2514 (5521682)	RC-2514-10	RC-2000-2 (2993427)
2-1/2	63.50	16-17	2.360"- 2.400" 60.0-61.0mm	RC-2516 (5521683)	RC-2516-10	RC-2000-2 (2993427)
2-1/2	63.50	18-19	2.390"- 2.430" 60.7-61.7mm	RC-2518 (5521684)	RC-2518-10	RC-2000-2 (2993427)