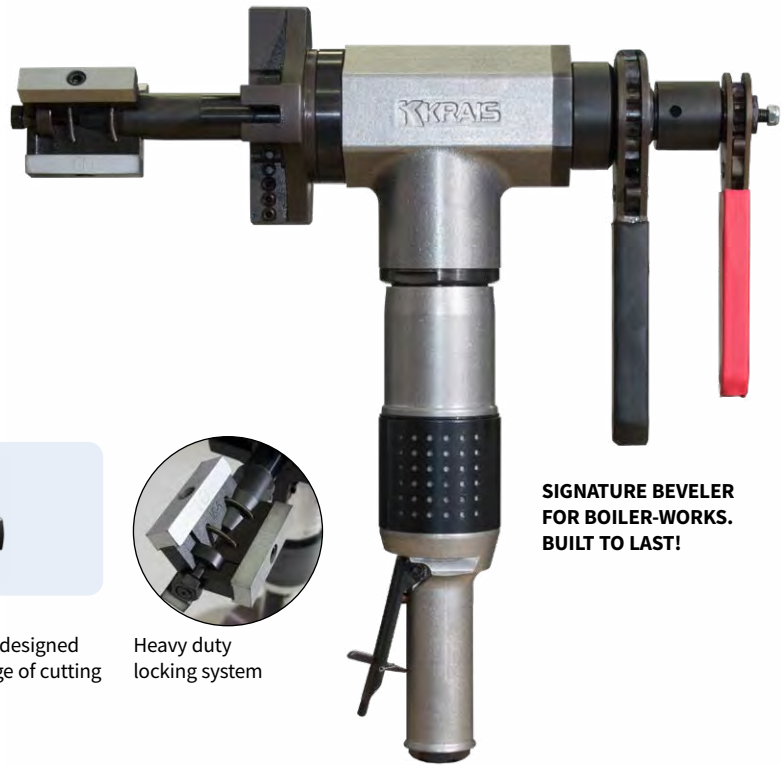


PrepMill

The PrepMill series pneumatic tube facing, bevelling and weld removal machine. The PrepMill is a rugged, fast, portable weld end preparation lathe for various tubes including stainless steel and other high chromium alloys. Machine is constructed on two opposite set up taper roller bearings that makes the machine extremely stable and very rigid and compact. A standard machine is equipped to cover 25 to 122 mm ID (1" to 4,8") with a 116 mm cutter head.

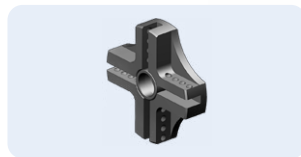


SIGNATURE BEVELER FOR BOILER-WORKS. BUILT TO LAST!

STANDARD SET UP



SHAFT25
Self-align, heavy duty locking system. Shafts and jaws are longer and wider to ensure maximum clamping force.



116 MM (4,56")
The large cutter head, designed to fasten the wide range of cutting inserts.



Heavy duty locking system

STANDARD WORKING RANGE				TOTAL WORKING RANGE			
APPLICATION RANGE		LOCKING RANGE		APPLICATION RANGE		LOCKING RANGE	
25 – 127 mm		25 – 122 mm		20 – 127 mm		20 – 122 mm	
1 – 5"		1,0 – 4,8"		0,787 – 5"		0,787 – 4,8"	
FEED STROKE		POWER		FREE SPEED		TORQUE	
25 mm	1"	1,3 hp		120 rpm		140 Nm	105 Ft.lbs
55 cfm	1,3 m ³ /min	2,59"	66 mm	14,5"	370 mm	20,5 Lbs	9,5 kg

PREPMILL-E

PrepMill-E is electric version of PrepMill. A standard machine can cover the same pipe sizes and comes with the same cutting head. The electric motor made by Makita with 3 stage planetary gear box made by KRAIS has variable speed control and produce enormous torque. Is interchangeable with pneumatic drive and can be purchased separately at any time.

Free Speed 115 RPM
Power..... 750 W
Torque 368 Nm (280 Ft.Lbs)
Feed Stroke 25 mm (1")

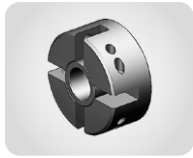


EXAMPLE TOOL APPLICATION



PrepMill with its 66 mm (2-5/8) width body perfectly fit into limited access areas such as Water wall panels. Easy to clamp and feed with our heavy duty ratchet or star wheel feed.

OPTIONAL HEADS



66 MM (2,59")
The smallest cutter head, designed to fasten the wide range of cutting inserts.



88 MM (3,46")
The popular, medium cutter head, designed to fasten the wide range of cutting inserts.



OBPM
Head for outside bevelling of tubes and pipes. Available in wide range of diameters and beveling angles.
→ TABLE PAGE 86



PRRMBH
Head for membrane and overlay removal. Efficiently remove material between boiler tubes.
→ TABLE PAGE 86



STWRPM
Head dedicated for strength weld removal. Heads are easy to align and sized per tube diameter.
→ TABLE PAGE 87



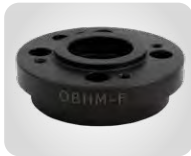
TFPM
Tube facing milling head for tubes made of any type of material. Utilizes 6% cobalt inserts.
→ TABLE PAGE 87

OPT. SHAFT



SHAFT20
Self-align, heavy duty locking system. Shafts and jaws are longer and wider to ensure maximum clamping force.

OTHER OPTIONAL ACCESSORIES



HEAD FLANGE
Adapter to use all MiniMill's special cutter heads (from size 1-1/2" and up).



SPEED REDUCER
Easy to use gearbox for 3x speed reduction. Increases the torque, enabling the machine to generate a thick chip whilst reducing the cutting time.



FAST CLAMPING SYSTEM
System offers rapid tube to tube cycle time, increased productivity (up to 4x) with little operator fatigue. Ideal for large amount of end preps.



STAR WHEEL
The most precise feed system. Used in many basic and demanding applications.

PREMILL LOCKING RANGES

WITH SHAFT25

SHAFT	JAWS	EXT.	RANGE [MM]		RANGE [INCH]		SPRING		
			MIN	MAX	MIN	MAX	NO.	QTY.	
SHAFT25	NS-1	-	25	30	0,984	1,181	SP-24	1	
	NS-2	-	30	35	1,181	1,378	SP-24	1	
	NS-3	-	35	40	1,378	1,575	SP-25	2	
	NS-4	-	40	45	1,575	1,772	SP-25	2	
	NS-5	-	45	50	1,772	1,969	SP-25	2	
	NS-6	-	50	55	1,969	2,165	SP-25	2	
	NS-7	-	55	60	2,165	2,362	SP-25	2	
	NS-8	-	60	65	2,362	2,559	SP-25	2	
	NS-5	NS-10		62	67	2,441	2,638	SP-25	2
	NS-6	NS-10		67	72	2,638	2,835	SP-25	2
	NS-7	NS-10		72	77	2,835	3,031	SP-25	2
	NS-8	NS-10		77	82	3,031	3,228	SP-25	2
	NS-5	NS-20		82	87	3,228	3,425	SP-25	2
	NS-6	NS-20		87	92	3,425	3,622	SP-25	2
	NS-7	NS-20		92	97	3,622	3,819	SP-25	2
	NS-8	NS-20		97	102	3,819	4,016	SP-25	2
	NS-5	NS-30		102	107	4,016	4,213	SP-25	2
	NS-6	NS-30		107	112	4,213	4,409	SP-25	2
	NS-7	NS-30		112	117	4,409	4,606	SP-25	2
	NS-8	NS-30		117	122	4,606	4,803	SP-25	2

WITH SHAFT20

SHAFT	JAWS	EXT.	RANGE [MM]		RANGE [INCH]		SPRING	
			MIN	MAX	MIN	MAX	NO.	QTY.
SHAFT20	NS-0	-	20	24	0,787	0,945	SP-19	1
	NS-1	-	24	28	0,945	1,102	SP-19	1

EXAMPLE TOOL APPLICATION

