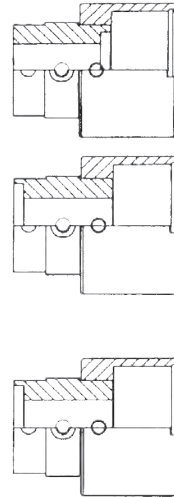


# Heat Exchanger – Condenser Expanders

## **Flip Collars**

All G-800 and G-1200 Series tube expanders are supplied with a flip collar with a 10-32 UNF auto-lube port. The flip collar allows for flush and recessed tube rolling. The standard expander is supplied with a recess of 1/8" (3 mm). Other recess lengths are available. Contact technical service for details.



## **Fixed Recess Thrust Collars**

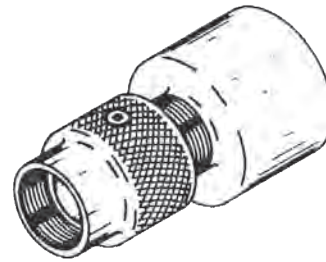
Fixed recess collars are available for tube projections between 3/16" (4.7mm) to 7/8" (22.2 mm) from the tube sheet for special applications and require a quote from technical service.

## **Full Recess Thrust Collars**

The full recess collar accommodates tube projections up to 7/8" (22.2 mm) from the tube sheet.

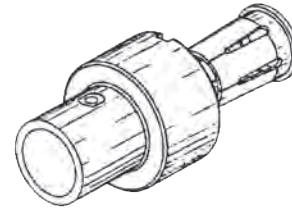
## **Adjustable Recess Thrust Collars**

The adjustable recess collar accommodates tube projections up to 1/2" (12.7 mm) from the tube sheet.



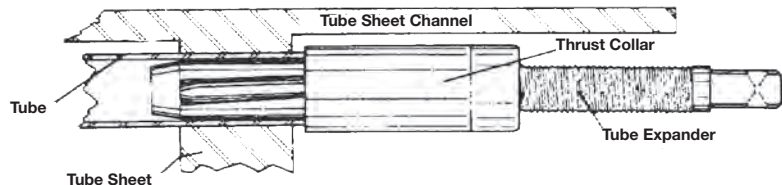
## **Thin Wall Thrust Collars**

Thin wall thrust collars are recommended when expanding 20 BWG .035" (0.9 mm) or lighter wall tubes. This design limits the possibility of the tube being drawn up inside the thrust collar. Removing the collar's collet allows the expander to be used as a full recess style compensating for various length tube projections from the tube sheet. These collars are application specific and require a quote from technical service.



## **Small Diameter Thrust Collars**

Small diameter thrust collars are recommended for rolling tubes in confined areas, close to tube sheet channels, or if there is interference from adjacent tubes.



## **Tube Expander Lubricant "LUBE-A-TUBE"**

- A water soluble lubricant especially compounded for use with tube expanders. It prevents rust and acts as a coolant providing longer life and smoother rolling.
- 5-gallon container: LAT-5 (order number 2981695).

