

## MiniMill 201

The MiniMill 201 is a rugged, fast, portable weld end preparation lathe for various tubes including stainless steel and other high chromium alloys. A standard machine comes complete with a 60 mm head, a locking system and includes all jaw sets to cover sizes of 20 to 44 mm (0.787" to 1.732")

### STANDARD SET UP



#### SHAFT20

Redesigned heavy duty locking system. Shafts and jaws are longer and wider to ensure maximum clamping force. The jaws are self-align.



#### 60 MM (2,36")

The smallest cutter head, designed to fasten the wide range of cutting inserts.



**IMPORTANT!**  
Read how to properly lock on page 6

STANDARD WORKING RANGE				TOTAL WORKING RANGE			
APPLICATION RANGE		LOCKING RANGE		APPLICATION RANGE		LOCKING RANGE	
20 – 51 mm		20 – 48 mm		10 – 51 mm		10 – 48 mm	
0,787 – 2,008"		0,787 – 1,890"		0,394 – 2,008"		0,394 – 1,890"	
FEED STROKE		POWER		FREE SPEED		TORQUE	
20 mm	0,787"	1,3 hp		200 rpm		72 Nm	53 Ft.lbs
55 cfm	1,3 m <sup>3</sup> /min	2,32"	59 mm	13,1"	335 mm	11,4 Lbs	5,2 kg

### EXAMPLE TOOL APPLICATION



Standard locking system with handle feed makes quick work of trimming back tubes.



Completed strength weld removal.

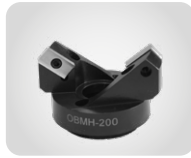


Facing, bevelling tubes quickly and safely.

**OPTIONAL HEADS**



**88 MM (3,46")**  
The popular, medium cutter head, designed to fasten the wide range of cutting inserts.



**OBMH**  
Outside bevelling of both tubes and pipes. Sized per tube or pipe diameter and angle of required weld bevel.  
→ TABLE PAGE 84



**SWROTC**  
Seal weld removal head over tube circumference prior to re-welding the damaged joint without removing the tube.  
TABLE PAGE 85



**STWRMH**  
Custom designed head dedicated for strength weld removal. Heads are sized per tube diameter.  
→ TABLE PAGE 83



**MICROSHAFT**  
A system with interchangeable guide shafts. A complete set covers 9,0 to 15,0 mm inside diameter.



**MINISHAFT**  
A system with interchangeable guide shafts. A complete set covers 12,4 to 48 mm inside diameter.

**OTHER OPTIONAL ACCESSORIES**



**RATCHET FEED**  
Feed system allowing to work in narrow and tight locations, eg. in water walls.



**LEVER FEED**  
Quick and easy feed system. Used in many basic applications.



**SPEED REDUCER**  
Easy to use gearbox for 3x speed reduction. Increases the torque, enabling the machine to generate a thick chip whilst reducing the cutting time.



**FAST CLAMPING SYSTEM**  
System offers rapid tube to tube cycle time, increased productivity (up to 4x) with little operator fatigue. Ideal for large amount of end preps.

**MINIMILL 201 LOCKING RANGES**

**WITH SHAFT20**

SHAFT	JAWS	EXT.	RANGE [MM]		RANGE [INCH]		SPRING	
			MIN	MAX	MIN	MAX	NO.	QTY.
SHAFT25	NS-0	-	20	24	0,787	0,945	SP-19	1
	NS-1	-	24	28	0,945	1,102	SP-19	1
	NS-2	-	28	33	1,102	1,299	SP-19	1
	NS-3	-	33	38	1,299	1,496	SP-20	2
	NS-4	-	38	43	1,496	1,693	SP-20	2
	NS-5	-	43	48	1,693	1,890	SP-20	2

**WITH MINISHAFT**

SHAFT	SIZE		JAWS	RANGE [MM]		RANGE [INCH]		SPRING
	[INCH]	[MM]		MIN	MAX	MIN	MAX	
901MM#151	0,492	12,40	201MM#36	12,40	14,50	0,488	0,571	DW-11
905MM#151	0,547	13,90	203 MM#36	13,90	16,00	0,547	0,630	DW-12,5
909MM#151	0,661	16,90	205 MM#36	15,90	18,00	0,626	0,709	DW-15,5
			207 MM#36	16,90	19,00	0,665	0,748	
			209 MM#36	18,90	21,00	0,744	0,827	
			211 MM#36	19,90	22,00	0,783	0,866	
			213 MM#36	20,90	23,00	0,823	0,906	
			214 MM#36	21,90	24,00	0,862	0,944	

**WITH MICROSHAFT**

SHAFT	SIZE		JAWS	RANGE [MM]		RANGE [INCH]		SPRING
	[INCH]	[MM]		MIN	MAX	MIN	MAX	
800MM#151	0,354	9,00	301MM#36	10,00	11,00	0,394	0,433	DW-7,5
801MM#151	0,394	10,00	303MM#36	11,00	12,00	0,433	0,472	DW-8,5
805MM#151	0,453	11,50	305MM#36	12,00	13,00	0,472	0,512	DW-10
			307MM#36	13,00	14,00	0,512	0,551	
			309MM#36	14,00	15,00	0,551	0,591	