

HyperMill 56

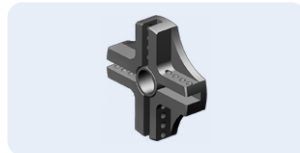
Powerful pneumatic tube facing, bevelling and weld removal machine. The HyperMill 56 is a rugged, fast, portable weld end preparation lathe for various tubes and pipes, including stainless steel and other high chromium materials. A standard machine is equipped with a solid locking system to cover most common tube sizes.



STANDARD SET UP



SHAFT30
Self-align, heavy duty locking system. Shafts and jaws are longer and wider to ensure maximum clamping force.



135 MM (5,3")
The large cutter head, very sturdy and rigid, designed to fasten the wide range of cutting inserts.



Heavy duty locking system

STANDARD WORKING RANGE				TOTAL WORKING RANGE			
APPLICATION RANGE		LOCKING RANGE		APPLICATION RANGE		LOCKING RANGE	
30 – 136 mm		30 – 136 mm		20 – 175 mm		20 – 166 mm	
1,181 – 5,354"		0,181 – 4,354"		0,787 – 6,890"		0,787 – 6,535"	
FEED STROKE		POWER		FREE SPEED		TORQUE	
40 mm	1,6"	1,3 hp		55 rpm		280 Nm	210 Ft.lbs
55 cfm	1,3 m ³ /min	3,22"	82 mm	15"	385 mm	19 Lbs	9 kg

HYPERMILL 56E

HyperMill 56E is electric version of HyperMill 56. The machine can cover the same pipe sizes and comes with the same cutting head. The electric motor made by Makita with 3 stage planetary gear box made by KRAIS has variable speed control and produce enormous torque. Is interchangeable with pneumatic drive and can be purchased separately at any time.



Free Speed 58 RPM
Power..... 750 W
Torque 720 Nm (530 Ft.Lbs)
Feed Stroke 40 mm (1,6")

EXAMPLE TOOL APPLICATION



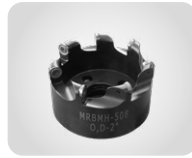
OPTIONAL HEADS



116 MM (4,56")
The large cutter head, designed to fasten the wide range of cutting inserts.



175 MM (6,89")
Cutter head special for the largest machines, designed to fasten the wide range of cutting inserts.



HMRBMH
Head for membrane and overlay removal. Efficiently remove material between boiler tubes.

OPTIONAL SHAFTS



SHAFT20
Self-align, heavy duty locking system. Shafts and jaws are longer and wider to ensure maximum clamping force.



SHAFT25
Self-align, heavy duty locking system. Shafts and jaws are longer and wider to ensure maximum clamping force.

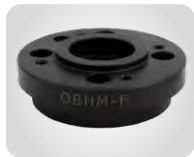
AVAILABLE HOLDERS

Streight weld removal holder



IB-45-37-HM
IB-45-30-HM
BIT:
2CDI

OTHER OPTIONAL ACCESSORIES



HEAD FLANGE
Adapter to use all MiniMill's special cutter heads (from size 1-1/2" and up).



SPEED REDUCER
Easy to use gearbox for 3x speed reduction. Increases the torque, enabling the machine to generate a thick chip whilst reducing the cutting time.



RATCHET FEED
Feed system allowing to work in narrow and tight locations, eg. in water walls.

STANDARD HYPERMILL 56 LOCKING RANGES

WITH SHAFT30

SHAFT	JAWS	EXT.	RANGE [MM]		RANGE [INCH]		SPRING		
			MIN	MAX	MIN	MAX	NO.	QTY.	
SHAFT30	NS-1		30	34	1,181	1,339	SP-29	1	
	NS-2		34	39	1,339	1,535	SP-29	1	
	NS-3		39	44	1,535	1,732	SP-30	2	
	NS-4		44	49	1,732	1,929	SP-30	2	
	NS-5		49	54	1,929	2,126	SP-30	2	
	NS-6		54	59	2,126	2,323	SP-30	2	
	NS-7		59	64	2,323	2,520	SP-30	2	
	NS-8		64	69	2,520	2,717	SP-30	2	
	NS-5	NS-10		66	71	2,598	2,795	SP-30	2
	NS-6	NS-10		71	76	2,795	2,992	SP-30	2
	NS-7	NS-10		76	81	2,992	3,189	SP-30	2
	NS-8	NS-10		81	86	3,189	3,386	SP-30	2
	NS-5	NS-20		86	91	3,386	3,583	SP-30	2
	NS-6	NS-20		91	96	3,583	3,780	SP-30	2
	NS-7	NS-20		96	101	3,780	3,976	SP-30	2
	NS-8	NS-20		101	106	3,976	4,173	SP-30	2
	NS-5	NS-30		106	111	4,173	4,370	SP-30	2
	NS-6	NS-30		111	116	4,370	4,567	SP-30	2
	NS-7	NS-30		116	121	4,567	4,764	SP-30	2
	NS-8	NS-30		121	126	4,764	4,961	SP-30	2

OPTIONAL HYPERMILL 56 LOCKING RANGES

WITH SHAFT30

SHAFT	JAWS	EXT.	RANGE [MM]		RANGE [INCH]		SPRING	
			MIN	MAX	MIN	MAX	NO.	QTY.
SHAFT30	NS-5	NS-40	126	131	4,961	5,157	SP-30	2
	NS-6	NS-40	131	136	5,157	5,354	SP-30	2
	NS-7	NS-40	136	141	5,354	5,551	SP-30	2
	NS-8	NS-40	141	146	5,551	5,748	SP-30	2
	NS-5	NS-50	146	151	5,748	5,945	SP-30	2
	NS-6	NS-50	151	156	5,945	6,142	SP-30	2
	NS-7	NS-50	156	161	6,142	6,339	SP-30	2
	NS-8	NS-50	161	166	6,339	6,535	SP-30	2

WITH SHAFT25

SHAFT	JAWS	EXT.	RANGE [MM]		RANGE [INCH]		SPRING		
			MIN	MAX	MIN	MAX	NO.	QTY.	
SHAFT25	NS-1	-	25	30	0,984	1,181	SP-24	1	
	NS-2	-	30	35	1,181	1,378	SP-24	1	
	NS-3	-	35	40	1,378	1,575	SP-25	2	
	NS-4	-	40	45	1,575	1,772	SP-25	2	
	NS-5	-	45	50	1,772	1,969	SP-25	2	
	NS-6	-	50	55	1,969	2,165	SP-25	2	
	NS-7	-	55	60	2,165	2,362	SP-25	2	
	NS-8	-	60	65	2,362	2,559	SP-25	2	
	NS-5	NS-10		62	67	2,441	2,638	SP-25	2
	NS-6	NS-10		67	72	2,638	2,835	SP-25	2
	NS-7	NS-10		72	77	2,835	3,031	SP-25	2
	NS-8	NS-10		77	82	3,031	3,228	SP-25	2
	NS-5	NS-20		82	87	3,228	3,425	SP-25	2
	NS-6	NS-20		87	92	3,425	3,622	SP-25	2
	NS-7	NS-20		92	97	3,622	3,819	SP-25	2
	NS-8	NS-20		97	102	3,819	4,016	SP-25	2

WITH SHAFT20

SHAFT	JAWS	EXT.	RANGE [MM]		RANGE [INCH]		SPRING	
			MIN	MAX	MIN	MAX	NO.	QTY.
SHAFT20	NS-0	-	20	24	0,787	0,945	SP-19	1
	NS-1	-	24	28	0,945	1,102	SP-19	1
	NS-2	-	28	33	1,102	1,299	SP-19	1
	NS-3	-	33	38	1,299	1,496	SP-20	2