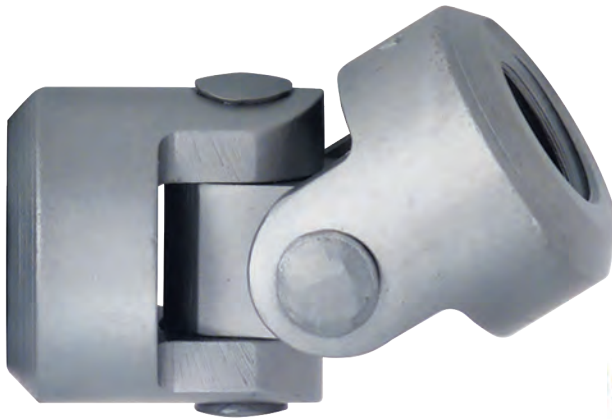


U-Joints

10-32 thru 7/8" N.C. thread combinations

- For adapting cleaning heads to cleaning motors.

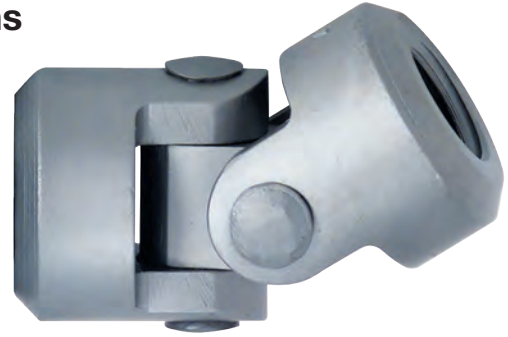
U-joints, components and ordering numbers.



Universal Joint No.	Shaft Jaw	Head Jaw	Link	Pin (2 req.)	U-Joint O.D. (in.)	Overall Length (in.)	Thread Size	Cleaner Kits Used On
2451 (4094800)	2452 (1057100)	2452 (1057100)	2454 (1057200)	2455 (1057300)	0.312	1.25	10-32 x 10-32	24
PA 3051 (4098200)	PA 3052 (1294500)	PA 3052 (1294500)	PA 3054 (1294600)	PA 3055 (1294700)	.437 (.375 Hex)	1.375	1/4" x 1/4" N.F. N.F.	27, 27 A, 30, 30 A
6451 (4096500)	6453 V (1094800)	6453 V (1094800)	6454 V (1095100)	6455 V (1095200)	0.500	1.687	1/4" x 1/4" N.F. N.F.	X 64
6451 B	6453 V (1094800)	6457 V (1095300)	6454 V (1095100)	6455 V (1095200)			1/4" x 5/16" N.F. N.C.	X 64
6151 C (4096300)	6452 V (1094600)	6453 V (1094800)	6454 V (1095100)	6455 V (1095200)			5/16" x 1/4" N.F. N.F.	X 60, X 61
6151 (4096100PT)	6452 V (1094600)	6452 V (1094600)	6454 V (1095100)	6455 V (1095200)			5/16" x 5/16" N.F. N.F.	X 61
6151 B (4096200)	6452 V (1094600)	6457 V (1095300)	6454 V (1095100)	6455 V (1095200)			5/16" x 5/16" N.F. N.C.	X 61
2651 (4094900)	2652 (1061700PT)	2652 (1061700PT)	2654 (1061900)	2655 (1062000)			0.625	1.593
6351 B (4096400)	6652 (1100100)	6657	6654 (1100300)	6655 (1100400)	0.750	2.125	3/8" x 5/16" N.F. N.C.	X 63
6651 B (4096800)	6652 (1100100)	6658 (1100700)	6654 (1100300)	6655 (1100400)			3/8" x 7/16" N.F. N.C.	X 65, X 66
6651 (4096700)	6652 (1100100)	6653 (1100200)	6654 (1100300)	6655 (1100400)			3/8" x 7/16" N.F. N.F.	31, X 63, X 65, X 66
3151 (4095000)	6653 (1100200)	6653 (1100200)	6654 (1100300)	6655 (1100400)			7/16" x 7/16" N.F. N.F.	31
31551 (4097500)	4153 (1079700)	4157 (1080200)	4154 (1079900)	4155 (1080100)	1.125	2.062	9/16" x 1/2" N.C. N.C.	3150
4151 W (4095700)	4152 (1079600)	4153 (1079700)	4154 (1079900)	4155 (1080100)			5/8" x 1/2" N.C. N.C.	11740 C
4151 (4095600)	4152 (1079600)	4152 (1079600)	4154 (1079900)	4155 (1080100)			5/8" x 5/8" N.C. N.C.	3162, 3175, 3187, 3200, 3212 4200, 4225, 4237, 4250, 4275
3333 (4095100PT)	3552 (1076800)	3332 (1074000)	3554 (1077500)	3555 (1077700)	1.500	2.75	3/4" x 3/4" N.C. N.C.	3360 Head
3532 (4095300)	3552 (1076800)	3533 (1076500)	3554 (1077500)	3555 (1077700)	1.593		3/4" x 3/4" N.C. N.C.	3540, 3560 Head 3/4 N.C. Rotor Thread
3531 (4095200)	3557 (1077800)	3533 (1076500)	3554 (1077500)	3555 (1077700)			7/8" x 3/4" N.C. N.C.	3540, 3560 Head 7/8 N.C. Rotor Thread

5/8" N.C. thru 1-38" N.F. thread combinations

- For adapting cleaning heads to cleaning motors.
U-joints, components and ordering numbers.



Universal Joint No.	Shaft Jaw	Head Jaw	Link	Pin (2 req.)	U-Joint O.D. (in.)	Overall Length (in.)	Thread Size	Cleaner Kits Used On
2251 (4094700)	3553 (1077400)	3553 (1077400)	3554 (1077500)	3555 (1077700)	1.500	2.750	5/8" x 5/8" N.C. N.C.	
2151 (4094600)	3552 (1076800)	3553 (1077400)	3554 (1077500)	3555 (1077700)			3/4" x 5/8" N.C. N.C.	3225, 3237
3551 (4095400)	3552 (1076800)	3552 (1076800)	3554 (1077500)	3555 (1077700)			3/4" x 3/4" N.C. N.C.	4300, 4300 A, 4325
3551 A	3552 (1076800)	3552 (1076800)	3554 A	3555 (1077700)		2.625	3/4" x 3/4" N.C. N.C.	15 Deg. Restricterd
1551	253	1553 (1046500)	654 (1029900)	255 (1025310PT)	1.625	3.437	3/4 x 5/8" N.C. N.C.	
251	253	253	654 (1029900)	255 (1025310PT)			3/4" x 3/4" N.C. N.C.	
21451 (4097400)	21452 (1133400)	1553 (1046500)	654 (1029900)	255 (1025310PT)	1.750	3.437	7/8" x 5/8" N.C. N.C.	3250, 3262
651 H (4094300)	653 (1029600PT)	653 (1029600PT)	654 (1029900)	655 (1030200)			3/4" x 3/4" N.C. N.C.	
651 (4094100)	652 (1029400)	653 (1029600PT)	654 (1029900)	655 (1030200)		7/8" x 3/4" N.C. N.C.	3275, 3287, 4350	
651 A	652 (1029400)	653 (1029600PT)	654 A	655 (1030200)		3.218	7/8" x 3/4" N.C. N.C.	15 Deg. Restricterd
551 (4094000)	652 (1029400)	652 (1029400)	654 (1029900)	655 (1030200)	1.937	3.687	7/8" x 7/8" N.C. N.C.	4400, 4425, 4450, 4450 A
21051 (4097000)	1152 (1043600)	21053 (1121900)	1154 (1044100)	1155 (1044200)			1" x 3/4" N.F. N.C.	3300, 3306
1151 (4094400)	1152 (1043600)	1153 (1044000)	1154 (1044100)	1155 (1044200)	2.250	4.062	1" x 7/8" N.F. N.C.	3312, 3318, 3325, 3337
20751 (4096900)	5052 (1085600PT)	1153 (1044000)	1154 (1044100)	5055 1155 (1086000) (1044200)			1-1/8" x 7/8" N.F. N.C.	3350 through 3475
5051 (4095800)	5052 (1085600PT)	5057 (1086800)	1154 (1044100)	5055 (1086000)			1-1/8" x 7/8" N.F. N.C.	4481, 4500, 4537
5051 E	5052 (1085600PT)	5053	1154 (1044100)	5055 (1086000)			1-1/8" x 1" N.F. N.F.	4575, 4600, 4650, 4712, 4762
5051 H (4096000)	5052 (1085600PT)	5052 (1085600PT)	1154 (1044100)	5055 (1086000)	2.437	5.312	1-1/8" x 1-1/8" N.F. N.F.	
21251 H (4097300)	21252 (1128500)	21257 (1130100)	21254 (1128800)	21255 (1129000)			1-3/8" x 1" N.F. N.F.	3500 through 3900
21251 (4097100)	21252 (1128500)	21253 (1128700)	21254 (1128800)	21255 (1129000)			1-3/8" x 1-1/8" N.F. N.F.	3975 through 31325
21251 A (4097200)	21252 (1128500)	21252 (1128500)	21254 (1128800)	21255 (1129000)			1-3/8" x 1-3/8" N.F. N.F.	