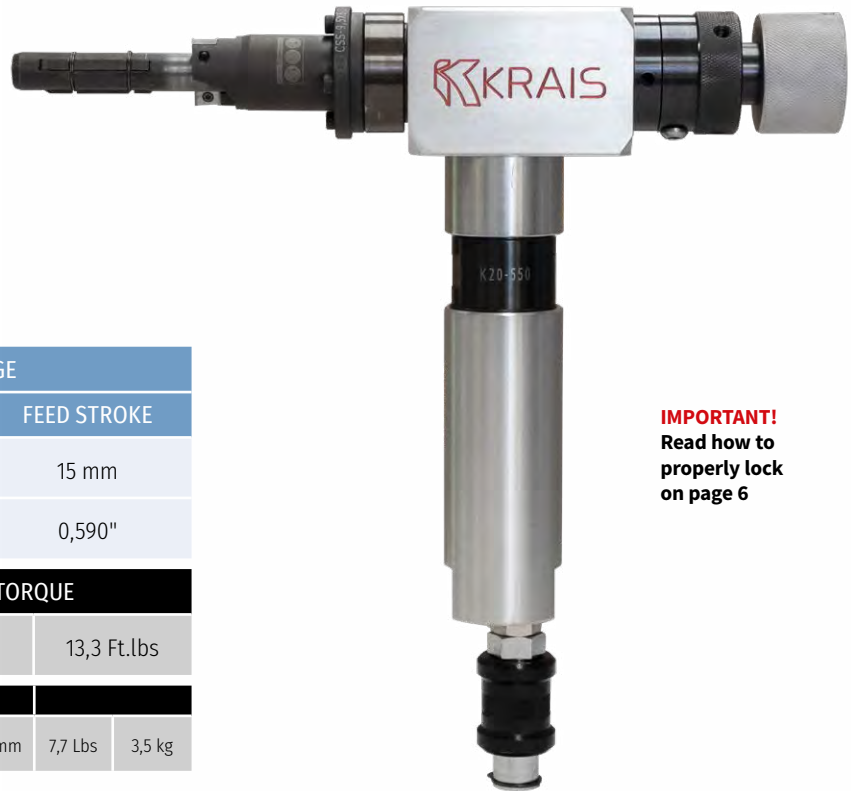


## QuickFacer

KRAIS QuickFacer is a rugged, fast, portable tube facing weld end preparation and weld removal tool. It is a micro lathe – designed for various tubes materials, including stainless steel and other high chromium materials. QuickFacer standard machine can be used for machining tube sizes from 8 mm ID to 38 mm OD (0.314” – 1.2”) and comes with a 50 mm cutting head.



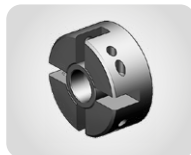
**IMPORTANT!**  
Read how to properly lock on page 6

STANDARD WORKING RANGE					
APPLICATION (ID-OD)		LOCKING RANGE	FEED STROKE		
8 – 38 mm		7,8 – 36 mm	15 mm		
0,314 – 1,496”		0,307 – 1,417”	0,590”		
POWER		FREE SPEED	TORQUE		
0,98 hp		300 rpm	18 Nm	13,3 Ft.lbs	
17 cfm	0,48 m <sup>3</sup> /min	1,73 x 10,82 x 12,20”	44 x 275 x 310 mm	7,7 Lbs	3,5 kg

### STANDARD SET UP



**MICROSHAFT**  
A system with interchangeable guide shafts. A complete set covers 10,0 to 15,0 mm ID tubes.



**50 MM (2”)**  
The smallest cutter head, designed to fasten the wide range of cutting inserts.

### OPT. SHAFT



**MINISHAFT**  
An optional system with interchangeable guide shafts. A complete set covers 12,4 to 48,0 mm ID tubes.

### OPTIONAL HEADS



**OBMH**  
Head for outside beveling tubes from 1/2” to 1-1/2” OD  
→ TABLE PAGE 84



**STWRMH**  
Head dedicated for strength weld removal. Heads are easy to align and sized per tube diameter, max size 1”  
→ TABLE PAGE 83



**TFMH**  
Tube facing milling head for tubes made of any type of material. Utilizes 6% cobalt inserts.  
→ TABLE PAGE 83

### LOCKING RANGES FOR SHAFTS

SHAFT	SIZE		JAWS	EXPANSION SHAFT	RANGE [MM]		RANGE [INCH]		SPRING
	[INCH]	[MM]			MIN	MAX	MIN	MAX	
878MM#151	0,307	7,80	378MM#36	MS-158-45	8,00	9,00	0,314	0,354	DW-7,5
885MM#151	0,334	8,50	385MM#36	MS-158-45	9,00	10,00	0,354	0,394	DW-7,7
800MM#151	0,354	9,00	301MM#36	MS-158-51	10,00	11,00	0,394	0,433	DW-7,5
801MM#151	0,394	10,00	303MM#36	MS-158	11,00	12,00	0,433	0,472	DW-8,5
805MM#151	0,453	11,50	305MM#36	MS-158	12,00	13,00	0,472	0,512	DW-10
			307MM#36	MS-158	13,00	14,00	0,512	0,551	
			309MM#36	MS-158	14,00	15,00	0,551	0,591	
901MM#152	0,492	12,40	201MM#36	MM#158-QF	12,40	14,50	0,488	0,571	DW-11
905MM#152	0,547	13,90	203 MM#36	MM#158-QF	13,90	16,00	0,547	0,630	DW-12,5
909MM#152	0,661	16,90	205 MM#36	MM#158-QF	15,90	18,00	0,626	0,709	DW-15,5
			207 MM#36	MM#158-QF	16,90	19,00	0,665	0,748	
			209 MM#36	MM#158-QF	18,90	21,00	0,744	0,827	
			211 MM#36	MM#158-QF	19,90	22,00	0,783	0,866	
			213 MM#36	MM#158-QF	20,90	23,00	0,823	0,906	
214 MM#36	MM#158-QF	21,90	24,00	0,862	0,944				
915MM#152	0,787	20,00	MADE ON ORDER						